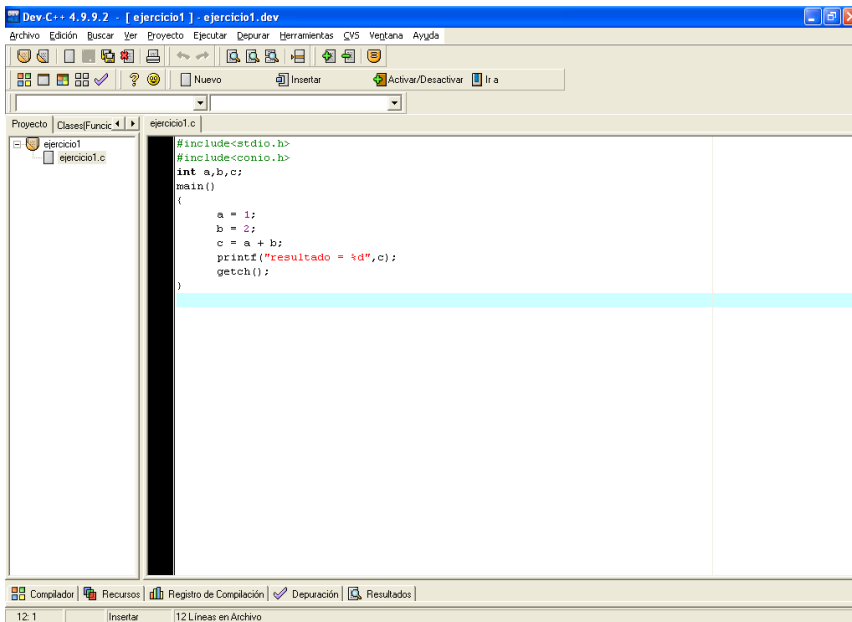
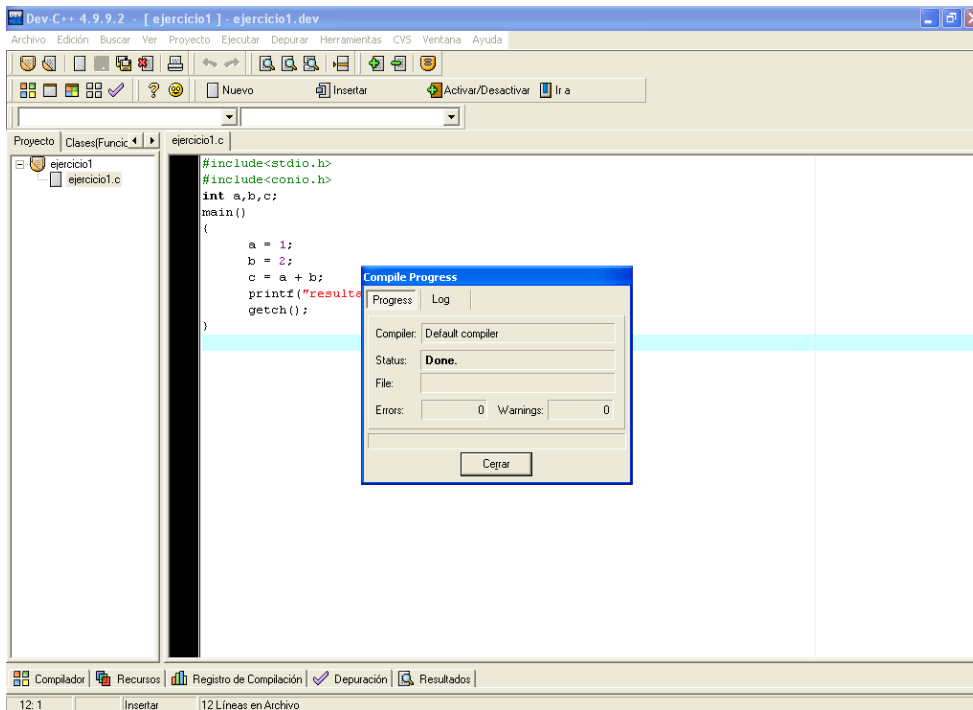


## CREACION DEL PROGRAMA



## COMPILACION DEL PROGRAMA



## EJECUCION DEL PROGRAMA



A screenshot of a Windows command prompt window. The title bar is blue and contains the text "C:\ D:\Documents and Settings\Jesus\Escritorio\dev-c\ejercicio1.exe" along with standard window control buttons (minimize, maximize, close). The main area of the window is black with white text. The text displayed is "resultado = 3\_" followed by a cursor. There are also some small white artifacts on the right side of the window, possibly from a scrollbar or other UI elements.

```
C:\ D:\Documents and Settings\Jesus\Escritorio\dev-c\ejercicio1.exe
resultado = 3_
```